



Bathing establishment Fact Sheet

Bathhouse name	PANAMA
Address	Lungomare Roma, 96
City	Marina di Pietrasanta (Lu)
Contacts	Phone +39 0584 1852600 - info@panamaversilia.com
Website	https://panamaversilia.com/

TESTED BY: [Handy Superabile - Social Promotion Association](#) in summer 2023

Please note The following information refers to the verification date shown at the bottom of each card. **The Association** is not responsible for any significant changes made by the property after the visit.

Summary

Bathing establishment Fact Sheet	1
Arrival at the facility.....	2
Private/public parking.....	2
Pathway from the parking lot to the main entrance	2
Reception.....	3
Bar/restaurant	4
Internal Pathways and common services.....	5
Internal Pathways	5
Toilet and shower accessible to guests with reduced mobility	6
Changing room	8
Beach.....	9
Children's play area	10
Swimming pool	10
Doctors' Offices/Healthcare Facilities	12



Project carried out with the contribution of the





Arrival at the facility

Private/public parking

Presence of private parking	YES
Type of private car park	Fine gravel
Presence of a parking space reserved for people with disabilities in the private car park	Not detected
Public parking nearby	YES
Type of public car park	asphalt
Presence of a parking space reserved for people with disabilities in the public car park	YES
	

Pathway from the parking lot to the main entrance

Pathway from the car park to the entrance	but the presence of fine gravel could make the path difficult for wheelchair users
There are markers and tactile maps	NO
Usable door/entrance width	over 90 cm with 5 cm step





Reception

Umbrella booking system	<input checked="" type="checkbox"/> Via web <input checked="" type="checkbox"/> By phone <input checked="" type="checkbox"/> On-site
Presence of multilingual staff	YES
Presence of plant plan with key to services available	NO
Presence of visuo-tactile map	NO

Project carried out with the contribution of the





Bulletin board/information panels at an average height of 130 cm in a well-lit area and font size at least 14 dpi with a contrast ratio greater than 4.5:1	NO
The staff attended training courses on welcoming people with different disabilities	NO

Bar/restaurant

Type of venue	Bar/restaurant . There are two bars, one indoor and one by the pool
Access to the premises	From the entrance, a step of about 5 cm leads to the bar, while to reach the restaurant tables you have to overcome a ramp 440 cm long, 150 cm wide, slope 7%, the same to access the swimming pool
Usable door/entrance width	83 cm
Bar counter	more than 100 cm for the internal one, external bench not detected
Types of tables	with central support
Space underneath the tables from the floor	70 cm
Multilingual menu	YES
Menus with large print fonts	Not detected
Braille menu	NO
Table service for people with disabilities	YES
Availability of gluten-free food	<input checked="" type="checkbox"/> bread <input type="checkbox"/> pasta <input checked="" type="checkbox"/> biscuits <input type="checkbox"/> ice cream <input type="checkbox"/> Pre-packaged foods





Internal Pathways and common services

Internal Pathways

Indicate whether the pathways connecting the entrance to the beach are flat or with ramps in addition to those already described

Obstacle-free paths





Toilet and shower accessible to guests with reduced mobility

Number of toilets accessible/usable by guests with reduced mobility	1
Access to the premises	via ramp 29 cm long, 84 cm wide, gradient 17.2 %
Usable width of the entrance door	84 cm and 5 cm step
WC height	52 cm
Open front toilet seat	YES
Support handles	on both sides
Flexible hand shower at the side of the toilet	NO
Free space on the sides of the toilet	left 25 cm right more than 90 cm frontal more than 90 cm
Electric doorbell/phone	NO
Washbasin with space underneath for wheelchair	63 cm
Height from the ground on the bottom edge of the mirror	not sufficient for use by a person in a wheelchair
Baby changing table	YES

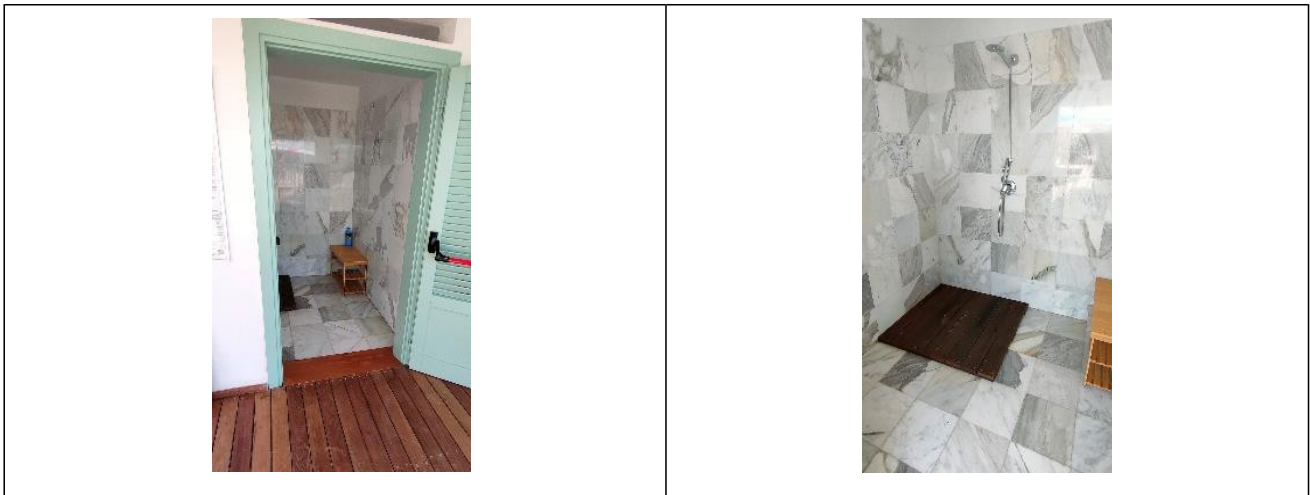
Project carried out with the contribution of the





<p>Accessible shower available for guests with reduced mobility</p>	<p>SI separated from the toilet room</p>
<p>Access to the shower room if separated from the toilet room</p>	<p>By means of a short ramp 29 cm long, 84 cm wide, gradient 17.2 %</p>
<p>Useful width of the door/entrance gate if separated from the toilet room</p>	<p>84 cm with 5 cm step</p>
<p>Shower type</p>	<p>open-type</p>
<p>Floor-level shower</p>	<p>With 4 cm high wooden platform</p>
<p>Shower chair</p>	<p>missing</p>
<p>Grab bar</p>	<p>missing</p>
<p>Presence of shower head or ups and downs</p>	<p>Sliding rails with lowest point height 175 cm</p>
<p>Electric doorbell/phone</p>	<p>NO</p>





Changing room

Accessible changing room available for guests with reduced mobility	NO
	





Beach

Type of beach	sand
Access to the beach	Flat
Walkway to reach the umbrellas	YES
Type of walkway	Wood/Cement
Walkway width	100 cm
	
	
Removable Platform between the walkway and the umbrella station to facilitate the passage and parking wheelchair	YES





<p>Amphibious beach chair available for helping people with reduced mobility to enjoy swimming (owned by the establishment or by association)</p>	<p>YES</p>
	

Children's play area

<p>Children's play area</p>	<p>missing</p>
<p>There are games for children with reduced mobility</p>	<p>NO</p>

Swimming pool

<p>The property has a swimming pool</p>	<p>YES</p>
<p>Access to the swimming pool</p>	<p>by ramp 440 cm long, 150 cm wide 7 % slope</p>
<p>Useful width of the entrance gate</p>	<p>more than 90 cm</p>
<p>Access to the pool</p>	<p>with ladder</p>



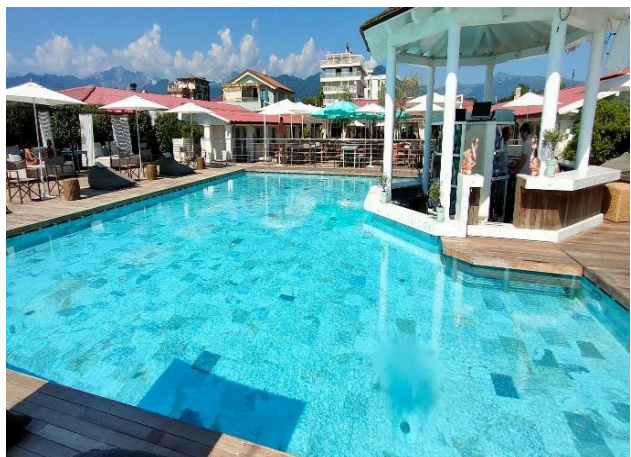
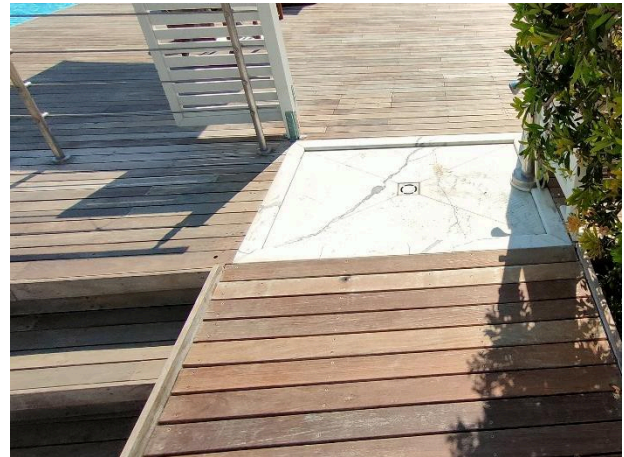
Project promoted by



Regione Toscana

Bathing aids for guests with reduced mobility

Not present



Project carried out with the contribution of the



**Presidenza del
Consiglio dei Ministri**
Ministro per la disabilità



Doctors' Offices/Healthcare Facilities

Hospitals near the facility	Ospedale Versilia SS1 Via Aurelia n. 335 55049 Lido di Camaiore LU Tel. 0584/6051
Other Healthcare Facilities	Distretto Sanitario ASL 12 Pietrasanta Via Martiri S. Anna 11 Tel. 05846058823 Croce Verde Via Risorgimento, 1 Forte dei Marmi Tel. 058484013 free dialysis and first aid service for white codes Emergency medical service Via Martiri S. Anna Tel. 0584 616774 Misericordia Via Mazzini Pietrasanta Tel. 058470055 Medical service "San Camillo" Nursing Home Via P.I. da Carrara, 37 Tel. 0584 7391 Dialysis service c/o Croce Verde Viale Italico at the corner of Via Risorgimento Forte dei Marmi Tel. 058484013 affiliated with AUSL

TESTED BY: **Handy Superabile Social Promotion Association in summer 2023**

